

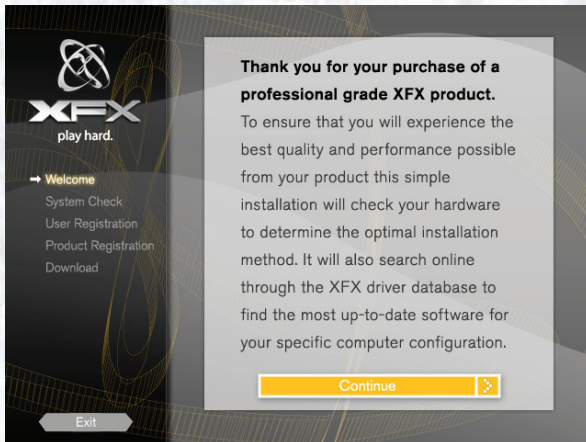
XFX GRAPHICS CARD INSTALLATION GUIDE

Removal Of Current Drivers

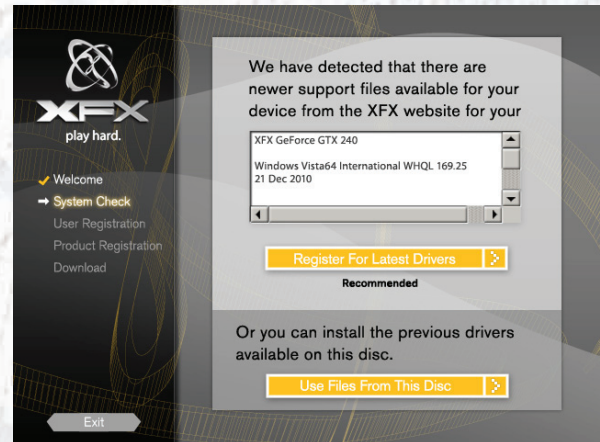
- It is recommended that you remove any previous display drivers before installing any new drivers if you are upgrading your card, if installing into a new system then you can disregard this section.
- In Windows XP you can remove previous drivers by going to Control Panel – Add / Remove Programs and removing any graphics utilities that may be installed for current / previous display cards.
- In Windows Vista this can be done by going to Control Panel – Programs and Features and removing any graphics utilities that may be installed for current / previous display cards.

Mainboards with Onboard graphics adapter

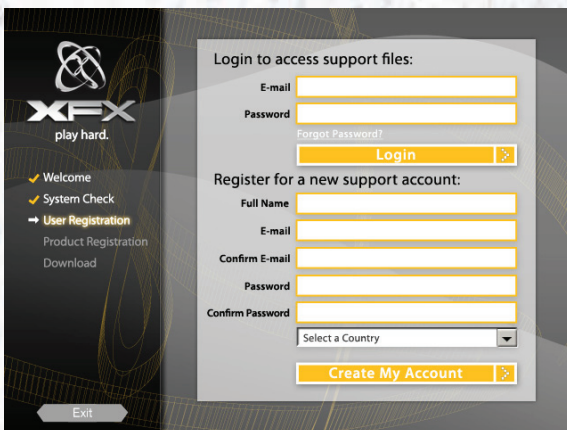
- It is advised to disable any onboard graphics adapters, either by jumper on the mainboard, or by changing the graphics adapter priority in the Mainboard BIOS. Please refer to your mainboard manual on how to do this.



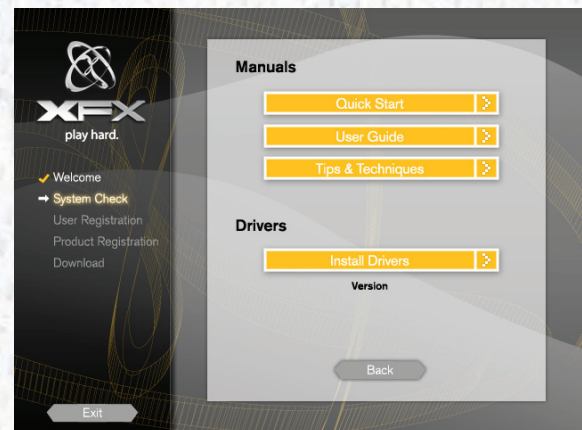
1. Insert XFX Driver disc into disc drive, and let it Auto run.



2. If an Internet connection is found then the disc will check your new XFX graphics card against our database to see if there are any newer drivers available for your specific card.

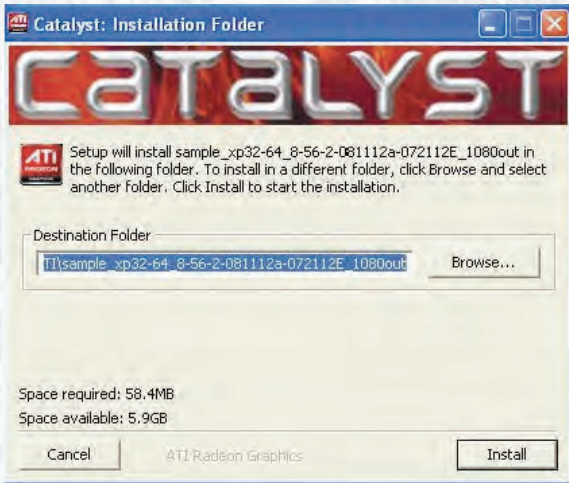


3. If you want the Newer drivers all you need to do is register simply and quickly, one time only via the disc, you can add other XFX products to this registration at anytime. You can also use this disc to login to your support account at a later date.



4. If no internet connection is found or you choose "Use files from disc" then you will be presented with a Manuals and Drivers Page, Here you can view the Manuals from the disc or Install the drivers from the disc.

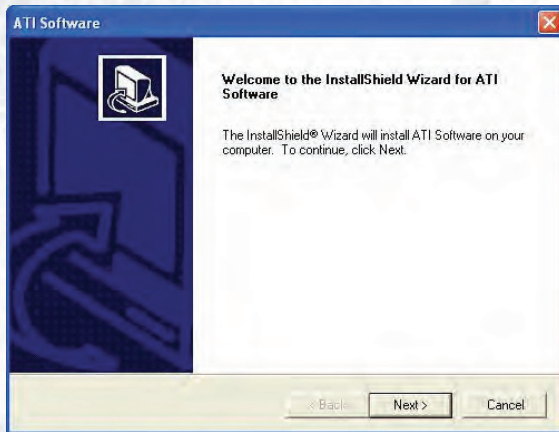
ATI Windows XP Driver Installation Guide



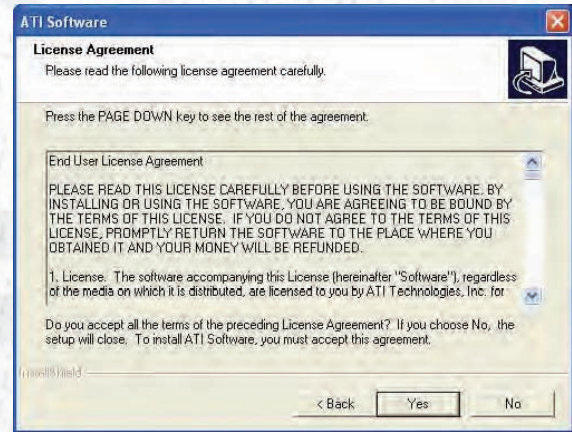
1. When the driver file has been opened, the files will need to be saved to a location specified by you (See screenshot).



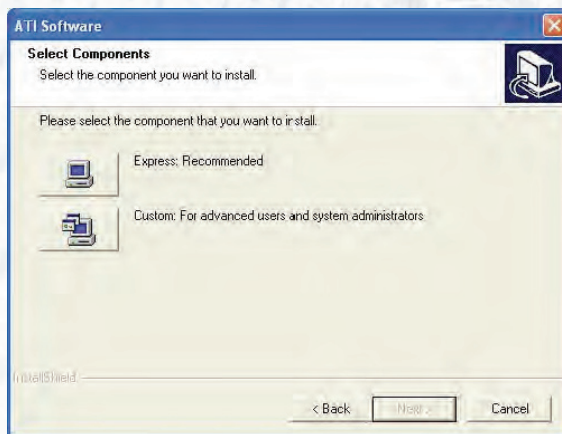
2. Once the file location has been selected, the files will be extracted to this location, as shown below.



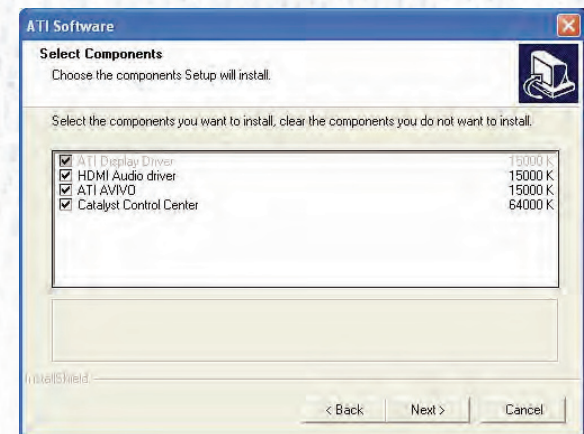
3. As shown in the screenshot below, the InstallShield Wizard will now begin

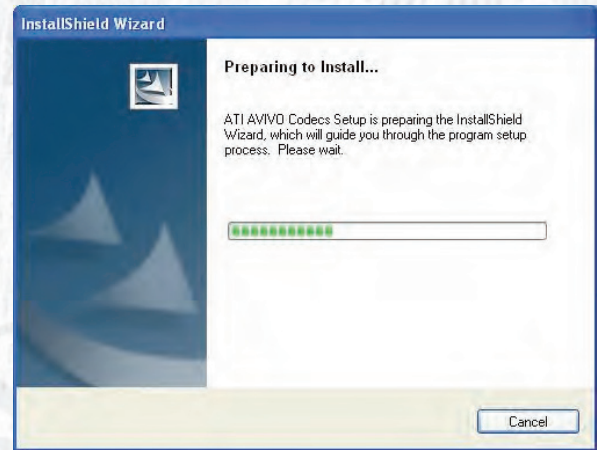
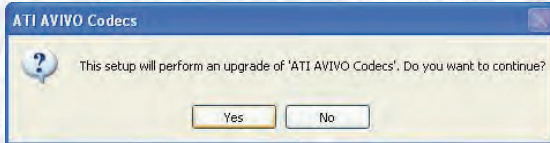
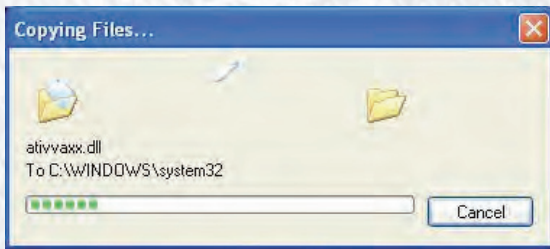


4. Before the InstallShield Wizard starts the installation, the License Agreement must be accepted, by clicking "Yes".

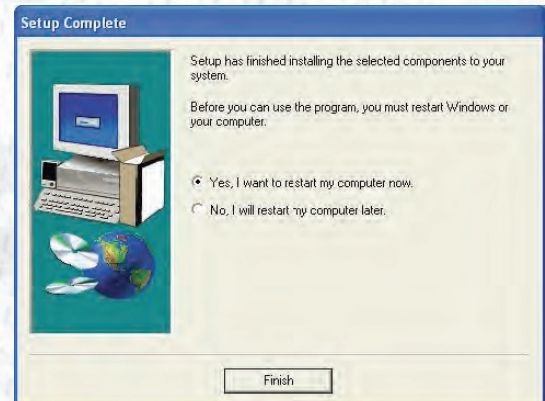
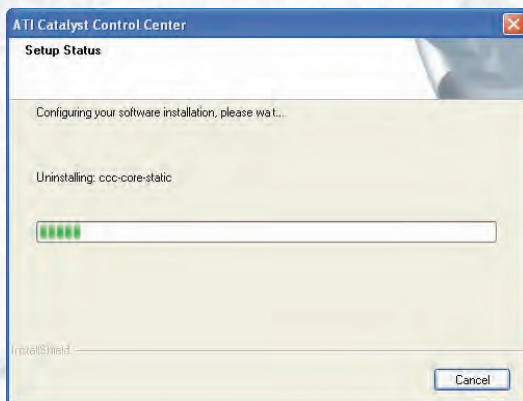


5. There are two installation options to select from; Express and Custom. With Custom installation, there is an option to install only certain components, leaving others out. Once the necessary components have been selected, click "Next".



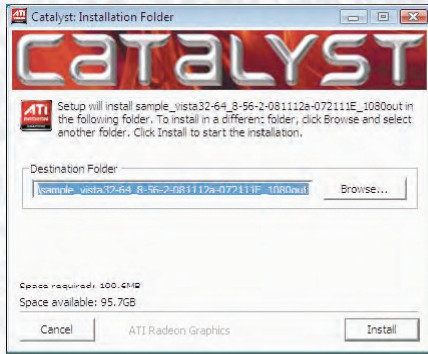


6. The installation will now begin extracting the les to the system, prompting the user to accept that the ATI AVIVO Codecs will be upgraded. Once "Yes" has been clicked, the InstallShield Wizard will prepare the installation.

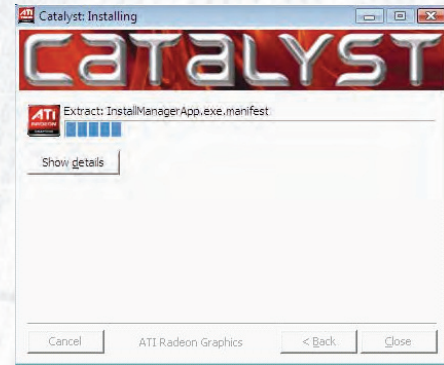


7. The next step congures and installs the components onto the system, requiring a system reboot for the changes to come into eect. Upon restart, the ATI display drivers will be installed and ready to us.

ATI Windows Vista Driver Installation Guide



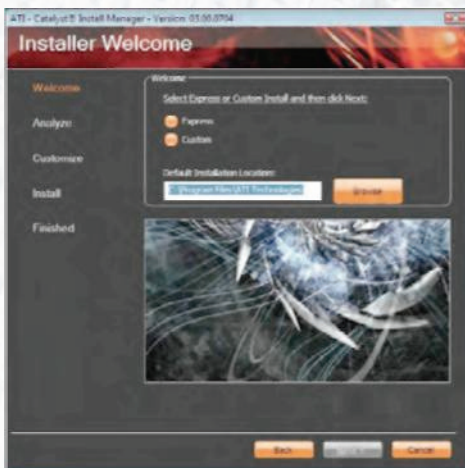
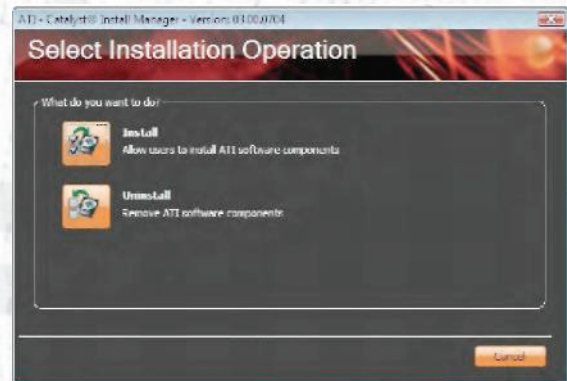
1. When the driver file has been opened, the files will need to be saved to a location specified by you (See screenshot).



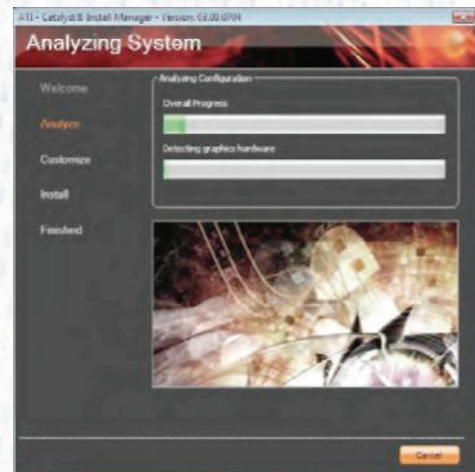
2. Once the Destination Folder has been selected, the files will begin to be extracted to the specified location, as shown.

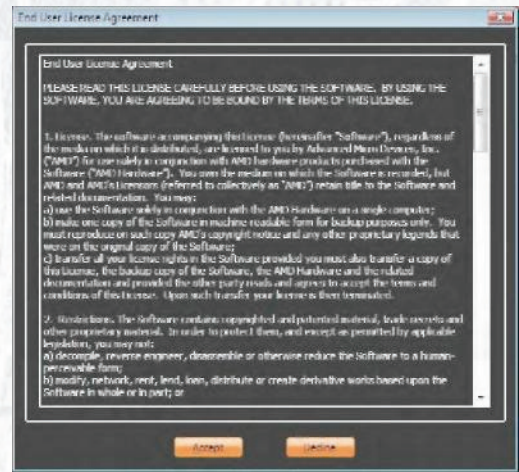


3. Once the extraction has finished, the Language Selection screen will appear. After selecting the required language, click "Next". This screen will ask if you wish to install or uninstall the files. (See screenshots)

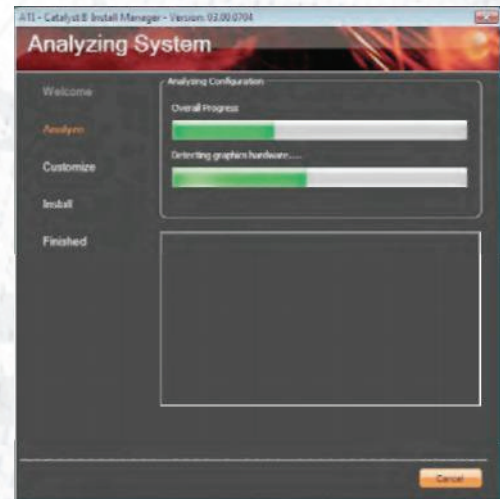


4. When the "Install" option has been selected, there are two installation options to select from; Express and Custom. If the Custom option has been selected, the Installation Manager will begin to analyse the current configuration.

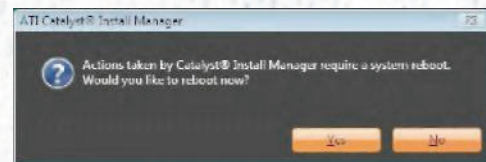
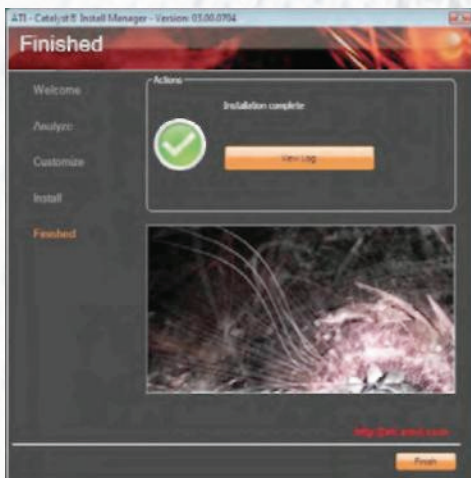




5. This is followed by the Component Selection screen, which allows certain components to be left out of the installation (shown in the screenshot). We recommend using "Express" if you are not familiar with the drivers. When either "Express" or "Custom" installation have been selected, the End User License Agreement will need to be accepted.



6. Once the End User License Agreement has been accepted, Windows Vista Security may ask for confirmation of the installation. After "Install" has been selected, the driver installation will begin.



7. The next screen will inform you if the installation has been completed successfully. Here, there will also be an option to view the installation log. If the installation has been unsuccessful, the installation log will contain any errors that may have occurred. The changes only come into effect once a system reboot has been carried out. Upon restart, the ATI display drivers will be installed and ready to use.